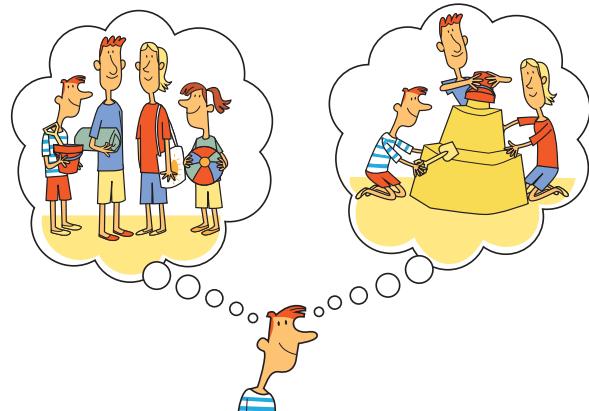




## Use

- We use **be going to** to talk about future plans.
  - 'Are you **going to** stay at home next Saturday?'
  - 'No, I'm **not**. I'm **going to** go to the beach with my family.'
  - 'What **are you going to** do at the beach?'
  - 'We're **going to** build a sandcastle.'



## Form

- We form **positive sentences with be going to** with:  
Subject + *be* + *going to* + verb.

Positive (+)			
Subject + <i>be</i>	<i>going to</i>	verb	
I'm	<b>going to</b>	swim	in the sea tomorrow.
You're			
He / She / It's			
We're			
They're			

- We form **negative sentences with be going to** with:  
Subject + *be* + *not* + *going to* + verb.

Negative (-)			
Subject + <i>be</i> + <i>not</i>	<i>going to</i>	verb	
I'm <b>not</b>	<b>going to</b>	swim	in the sea tomorrow.
You <b>aren't</b>			
He / She / It <b>isn't</b>			
We <b>aren't</b>			
They <b>aren't</b>			

### Tip

We usually use short forms of *be* with *going to*:

*I am going to swim.* → **I'm going to swim.**

*We are not going to swim.* → **We aren't going to swim.**

(OR **We're not going to swim.**)

We sometimes use the full forms in writing.



- We form **yes / no questions** with *be going to* like this:

*Be* + subject + *going to* + verb?

<b>yes / no questions</b>				
<i>Be</i>	subject	<i>going to</i>	verb	
Am	I	<b>going to</b>	swim	in the sea tomorrow?
Is	he / she / it			
Are	you we they			

- We usually answer *yes / no* questions with a short answer:

<b>Short answers</b>					
Positive (+)			Negative (-)		
Yes,	I	am.	No,	I'm not.	
	he / she / it	is.		he / she / it	isn't.
	you we they	are.		you we they	aren't.

- We form **wh-questions** with *be going to* like this:

Question word + *be* + subject + *going to* + verb?

<b>Wh- questions</b>					
Question word	<i>be</i>	subject	<i>going to</i>	verb	
<b>What</b>	am	I	<b>going to</b>	do	tomorrow?
	is	he / she / it			
	are	you we they			